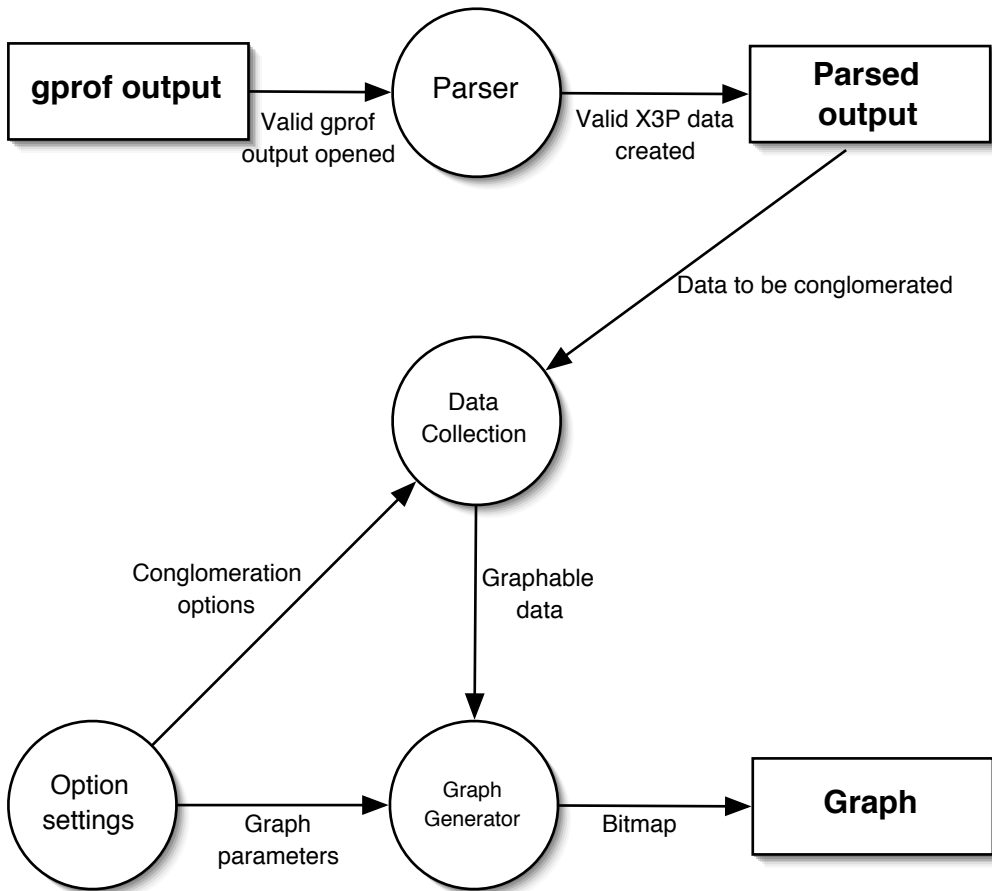


X3Profiler: Dataflow at Level 1:



Explanation: gprof output is opened and passed to the parser, which will then generate the parsed file recognizable by the rest of the system. The data from all the parsed files will be then collected for the purpose of displaying. It will be collected in the way described by the conglomeration options chosen by the user (or the defaults). Then, this data will be sent to the graph generator, which will use parameters determined by the user (or defaults) to generate the final bitmap, which is the graph our program is meant to create.